



INSTRUCTIONS

Cast on 123 sts. **Do not** join. Working back and forth across needle in rows, proceed as follows:

1st row: (RS). *K1. P1. Rep from * to last st. K1.

Last row forms Seed St Pat.

Work a further 7 rows in Seed St Pat, inc 1 st in center of last row. 124 sts.

Proceed in Lace Pat as follows:

1st row: (RS). (K1. P1) twice. K5. *yo. ssk. K1. (K2tog. yo) twice. K3. Rep from * to last 5 sts. (K1. P1) twice. K1.

2nd and alt rows: (K1. P1) twice. K1. Purl to last 5 sts. (K1. P1) twice. K1.

3rd row: (K1. P1) twice. K1. *K3. (yo. ssk) twice. K1. K2tog. yo. Rep from * to last 9 sts. K5. (P1. K1) twice.

5th row: (K1. P1) twice. K3. *(yo. ssk) 3 times. K4. Rep from * to last 7 sts. yo. ssk. (K1. P1) twice. K1.

7th row: (K1. P1) twice. K2. *(yo. ssk) 4 times. K2. Rep from * to last 8 sts. yo. ssk. K2. (P1. K1) twice.

9th row: As 5th row.

11th row: As 3rd row.

13th row: As 1st row.

15th row: (K1. P1) twice. K1. K2tog. yo. *K4. (K2tog. yo) 3 times. Rep from * to last 7 sts. K3. (P1. K1) twice.

17th row: (K1. P1) twice. K2. K2tog. yo. *K2. (K2tog. yo) 4 times. Rep from * to last 6 sts. K2. (P1. K1) twice.

19th row: As 15th row.

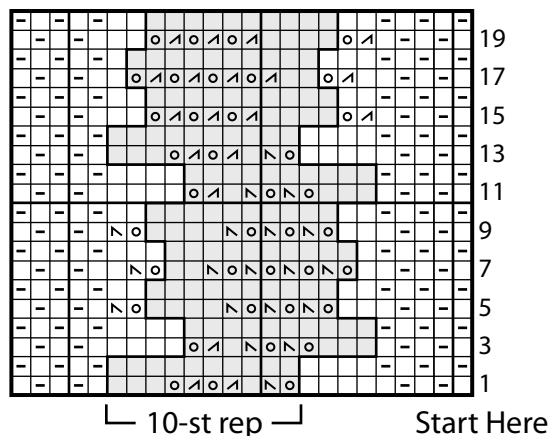
20th row: As 2nd row.

These 20 rows form Lace Pat.

Cont in Lace Pat until work from beg measures approx 69" [175.5 cm], ending on a 20th row of pat and dec 1 st at center of last row. 123 sts.

Work 8 rows in Seed St Pat.

Cast off in pat.



Key

- = Knit on RS rows. Purl on WS rows.
- ◻ = Purl on RS rows. Knit on WS rows.
- = yo
- ◻ = ssk
- ◻ = K2tog

PATONS® GRACE™ DIAMOND LACE WRAP (TO KNIT)

MEASUREMENTS

Approx 25" x 70" [63.5 x 178 cm].

MATERIALS

Patons® Grace™ (50 g/1.75 oz; 125 m/136 yds)
Viola (62322) **10 balls**

Size 4 mm (U.S. 6) circular knitting needle 24" [60 cm] long **or size needed to obtain tension.**

TENSION

23 sts and 31 rows = 4" [10 cm] in stocking st.

STITCH GLOSSARY: www.patonsyarns.com/abbreviations

Alt = Alternate(ing)	Rem = Remaining
Approx = Approximately	Rep = Repeat(s)
Beg = Beginning	RS = Right side
Cont = Continue(ity)	S11 = Slip next stitch knitwise
Dec = Decrease(ing)	Ssk = Slip next 2 stitches knitwise one at a time. Pass them back onto left-hand needle, then knit through back loops together.
Inc = Increase(ing)	St(s) = Stitch(es)
K = Knit	Yo = Yarn over
K2(3)tog = Knit next 2(3) stitches together	WS = Wrong side
P = Purl	
Pat = Pattern	
Pss0 = Pass slipped stitch over	

Patons®
Grace™
...a part of your life.

P.O. Box 40, Listowel ON N4W 3H3

www.patonsyarns.com



DIAMOND LACE WRAP

1 of 1